

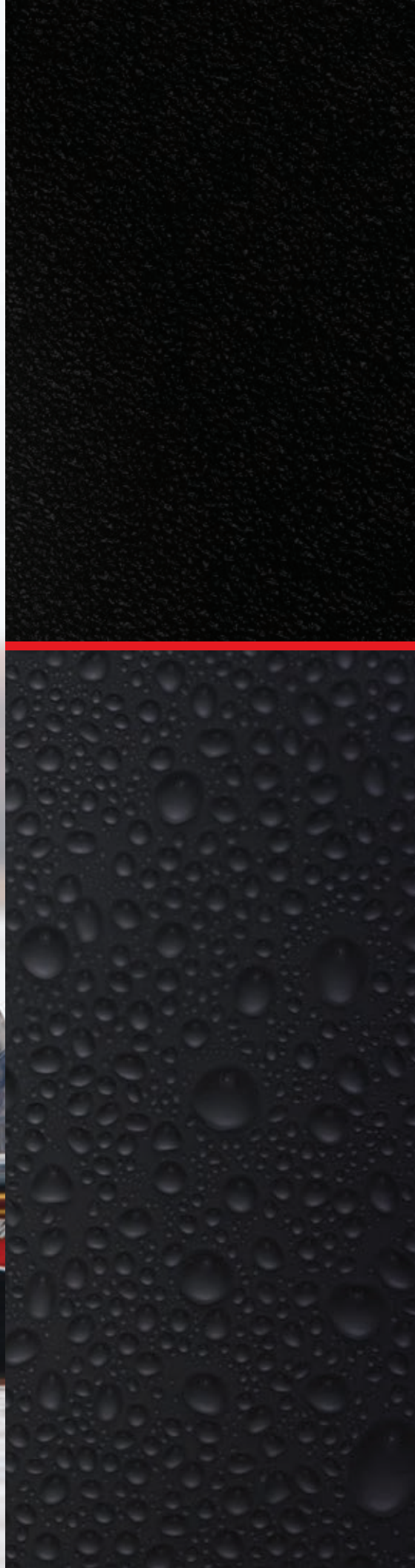
MotorGuide®

Product Guide
2015

**"There's only
one trolling motor
for me. And that's
MotorGuide."**

Kevin Vandam

ASK THE CHAMP, KEVIN VANDAM, and he'll tell you there's only one trolling motor that can fish as hard as he does. The same can be said for many other hard-charging pro anglers that rely on MotorGuide® in the most competitive tournaments out there. So even though fishing may not be your livelihood, it's good to know you can compete for bragging rights with the brand preferred by the leading pro circuit anglers like Kevin VanDam.



Built to earn you bragging rights.



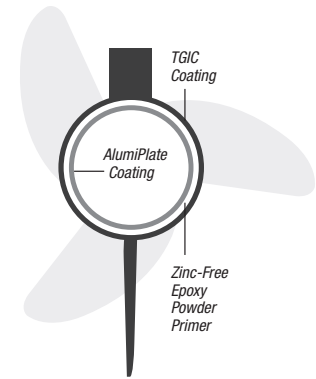
OUR X3 AND R3 MOTORS ARE NOW AVAILABLE with Digital power management technology for precise variable speed control and longer battery life. We've also teamed up with Lowrance® to bring anglers the ultimate in boat control by connecting our Pinpoint® GPS-equipped Xi5 with a compatible Lowrance fishfinder/chartplotter.



WHERE ENGINEERING AND ANGLING COME TOGETHER. MotorGuide® continues to build on a rich legacy of product innovation that began nearly 60 years ago. Backed by a strong commitment and dedicated resources, we have a renewed focus on designing, engineering and manufacturing best-in-class trolling motors that deliver quiet operation, precise control and ease of use. Plus, we're working to exceed our customer's expectations for motors that are reliable and durable over the long haul.

Here are just a few examples of the innovative technology and attention to detail that makes MotorGuide the choice of today's top anglers.

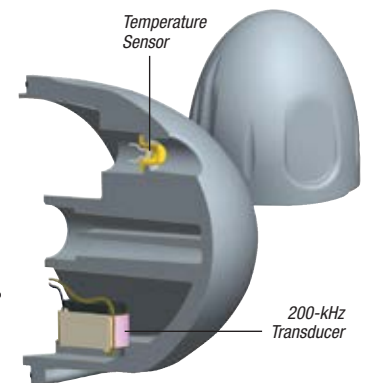
OUR LOWER UNIT IS AN ARMOR-PLATED WORKHORSE. It's tough as nails, runs cooler and lasts longer. It starts with a TGIC polyester topcoat for protection against scrapes and general abuse. Our saltwater motors undergo an even higher level of corrosion resistance with a multi-stage coating process that includes 99.9% pure AlumiPlate coating under zinc-free epoxy powder primer. Of course, every motor is water and pressure tested for optimum seal.



2-YEAR MOTORGUIDE WARRANTY.

As testament to the superior technology and rigorous testing that goes into every motor we build, we back them with one of the best warranties in the business.

UNRIVALED SONAR PERFORMANCE Our built-in 83/200 kHz sonar transducer delivers industry-leading clarity and detail, so you can pinpoint more fish and structure. It has an integrated temperature sensor and the nose cone is epoxy-potted for maximum protection. Compatibility with most leading sonar brands is easy with our Sonar Adapter cables.



RUN WITH THE DIGITAL DIFFERENCE. Smooth and precise variable speed control from 0% - 100% throttle and extended battery life (up to five times longer) are two reasons why more anglers are choosing motors equipped with our Digital power management technology. Digital's highly efficient, state of the art components run at lower temperatures, which means more power to the thrust motor. Plus, smart safeguards protect the motor and its components under severe operating conditions.



A NEW SPIN ON STEERING. We're focused on developing technology that improves boat control, and puts you in the best position to catch fish. An example is our Variable Ratio Steering technology, which provides an added measure of precision steering in the primary angling zone. This innovation utilizes proprietary technology that allows you to steer incrementally and precisely in a defined zone in front of the boat. Plus it reduces torque feedback for smoother operation. Available on select motors.



NEW for 2015

MAKE THE CONNECTION FOR ULTIMATE BOAT CONTROL.

MotorGuide and Lowrance® have brought their leading technologies together for the ultimate in boat control. All the Pinpoint GPS functionality, and more, can be operated from the touch-screen display on a compatible Lowrance unit. This seamless interface makes it easy to experience unsurpassed boat control and create new fishing strategies.



Pinpoint^{GPS}

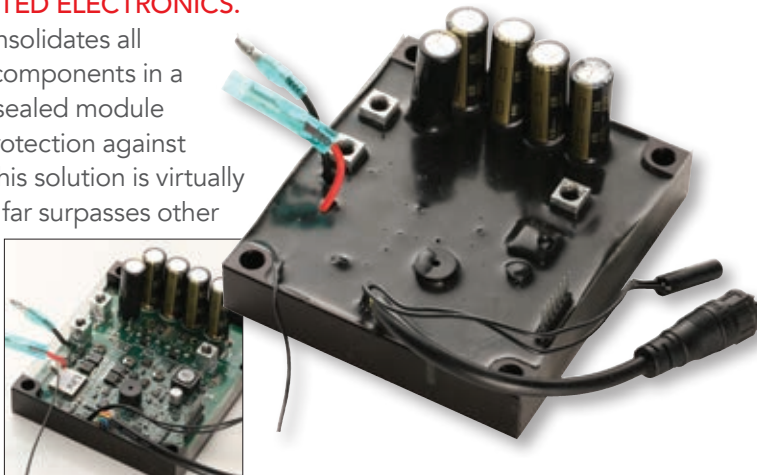
TAKE BOAT CONTROL TO THE NEXT LEVEL.

Pinpoint® GPS takes boat control to the next level with an ultra-precise receiver and two digital compasses for best-in-class accuracy. Pinpoint GPS and the Xi5 wireless trolling motor work together to navigate your boat – so you can focus on fishing.



FULLY PROTECTED ELECTRONICS.

MotorGuide consolidates all vital electronic components in a self-contained, sealed module for maximum protection against the elements. This solution is virtually bulletproof and far surpasses other systems in toughness and reliability.



PINPOINT® GPS TECHNOLOGY TAKES BOAT CONTROL TO THE NEXT LEVEL with an ultra-precise receiver and two digital compasses for best-in-class accuracy. Pinpoint GPS and the Xi5 wireless trolling motor work together to navigate your boat – so you can focus on fishing.



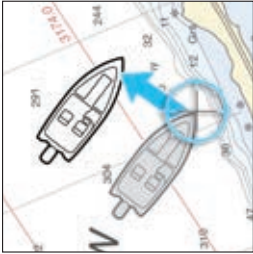
Pinpoint GPS

TWO 2 YEAR
WARRANTY



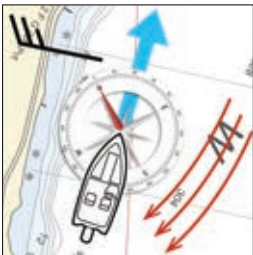
ANCHOR

When at a desired fishing spot, you can lock in the GPS coordinate and remain "anchored" within a few feet, even in wind and current. Save up to eight anchor spots for later use.



JOG

While in Anchor mode, use the Jog feature to shift your position five feet in any direction. You can Jog as often as you want. (Image shows one Jog left from the original Anchor position.)



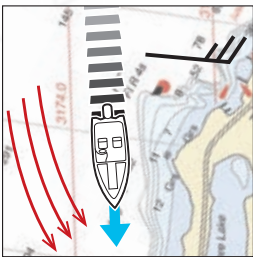
HEADING LOCK

Choose a heading and Pinpoint GPS and the Xi5 will keep you on a straight-line course until Heading Lock is released.



ROUTE RECORD/PLAYBACK

Record and store eight routes up to four miles long each. Return to and replay a stored route from anywhere.



CRUISE CONTROL

While underway using Heading Lock or Route Playback, Cruise Control will maintain a constant boat speed. It even makes adjustments for wind and current.



Xi5



Pinpoint GPS is available factory installed or an add-on accessory.

"The Xi5 with Pinpoint GPS gives me the quiet operation and precise control I need to stay on fish and be successful."

- Barry Stokes, host of Fox Southwest Outdoors Report

Go to motorguide.com and our YouTube site for more information on Pinpoint GPS.

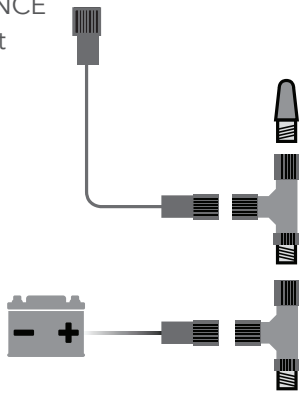


MOTORGUIDE® AND LOWRANCE® have brought their leading technologies together for the ultimate in GPS functionality and boat control. The new Gateway connection gives anglers precise control of Pinpoint® GPS from the touch-screen display on compatible Lowrance HDS units. The intuitive user interface is remarkably easy to operate. So in no time at all, you'll be fishing like never before.



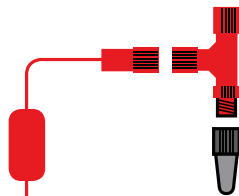


To Compatible
LOWRANCE
HDS Unit



Requires existing
NMEA 2000® network
or MotorGuide NMEA
2000® Starter Kit
(8M0092086)

SYSTEM REQUIREMENTS



To MotorGuide
Xi5 with Pinpoint GPS

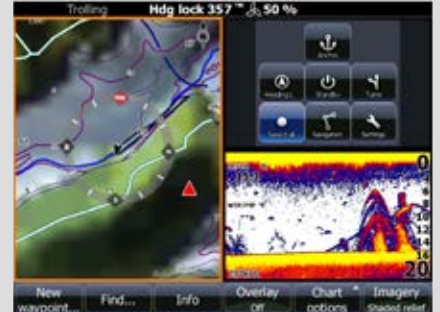
Requires MotorGuide
Pinpoint® GPS Gateway
Kit (8M0092085)



Go to motorguide.com and
our YouTube site to learn
more about experiencing the
ultimate in boat control.



UNSURPASSED CONTROL AND FREEDOM TO FISH.



Trolling Motor Status at a Glance and Enhanced Anchor Mode Functionality

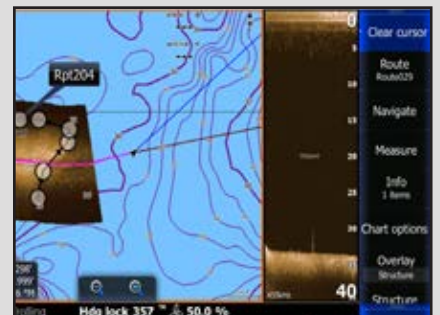
The high-definition display shows motor operating modes, prop speed, and heading. So you know exactly what's going on in real time.

It's easier than ever to anchor at a desired spot. With a simple touch of the screen, you can anchor at your current location, go to any previously stored waypoint, or Go to Cursor.



Use Sonar History to Trackback

Return to a desired location – like an area where fish were marked or a potential fish-holding structure -- simply by scrolling through the sonar history and using Go to Cursor. You can select from the DownScan Imaging™, StructureScan® or standard sonar to quickly put yourself back into a great spot.



Follow Depth and Structure with Programmable Routes

User-friendly technology makes it easy to program accurate routes using charts and StructureMap. You'll have the benefit of working with current depth and structure information. Plus, you'll be able to discern bottom surface types (mud vs. rock), for an added measure of confidence.

THE XI5 IS BEST IN CLASS FOR QUIET OPERATION AND PRECISE CONTROL. With wireless capability "right out of the box", anglers can command its precise control capabilities from anywhere on the boat. Plus, the Xi5 is stealthy quiet and silky smooth to put you over fish and keep you there. From top to bottom, the Xi5 is built with premium materials and robust components for the reliability and durability you expect from MotorGuide®.



Available Thrust:
55, 80, 105

Speed Control:
Digital Variable

Shaft Length:
45, 48, 54, 60

DIGITAL

TWO 2 YEAR
WARRANTY





COMPOSITE SHAFT is made with a premium material that will bend, but won't break. It's backed by a lifetime warranty, so you can fish anywhere with confidence.

WIRELESS PRO-STYLE FOOT PEDAL for outstanding control from anywhere on the boat. Steering is quiet and precise with 50% faster rotation than the competition. Freshwater Xi5 comes standard with foot pedal.



MOUNT BASE is made of corrosion-resistant anodized aluminum. A unique design guides and secures the motor into the stowed position.



Pinpoint_{GPS}

AVAILABLE PINPOINT® GPS has an ultra-precise receiver and digital compasses for best-in-class GPS accuracy. Pinpoint GPS works with the Xi5 to navigate your boat so you can focus on fishing. Features include Anchor, Heading Lock, Route Record and Cruise Control.



"I run hard in extremely rough conditions. Despite the pounding, my MotorGuide performs flawlessly."

- Keith Kavajecz, professional angler and host of *The Next Bite*



SALTWATER Xi5 comes standard with hand-held remote.



Features

Durable and Reliable

- Premium composite shaft has a lifetime warranty against breaking
- Electronics are encapsulated and impervious to water and dust
- Mount uses anodized aluminum. Hardware components and linkages are stainless steel

Precise Steering and Control

- Wireless "pro style" foot pedal for outstanding control. Saltwater Xi5 model comes with hand-held remote
- Steering transmission is highly-precise and has 50% faster rotation than the competition
- Digital variable speed control for exceptional low-speed trolling and smooth power delivery

Quiet on the Water

- Precision steering transmission gears and low-friction bearings.
- Extra rigid shaft support and low-vibration steering motor reduce noise, vibration and harshness

Easy to Use

- Mechanism aligns and guides the motor into the stowed position and secures it in place
- LED lights in the dashboard show battery level and status of key operating modes



FROM ITS SEALED LOWER UNIT to its specialized coatings, the Saltwater Xi5 is specially built to resist corrosion.

MOTORGUIDE® DIGITAL DURABILITY GIVES YOU PRECISE WIRELESS CONTROL AND FREEDOM OF MOVEMENT. The Wireless Digital Series comes standard with a wireless foot pedal and the versatility to use up to four remote inputs, including the optional hand-held remote. Select models have a built-in transducer and temperature sensor for an even greater advantage when connected to your compatible sonar unit. Stowing and deploying the Wireless is smooth and easy. And with a built-in removable mount, rough-water lower-unit cradle and an integrated battery indicator, you'll be more than ready to command its versatile "right out of the box" wireless performance.



WIRELESS

Available Thrust:
45, 55, 75

Speed Control:
Digital Variable

Shaft Length:
48, 54, 60

DIGITAL

**TWO 2 YEAR
WARRANTY**





COMPOSITE SHAFT is made with a premium material that will bend, but won't break. It's backed by a lifetime warranty, so you can fish anywhere with confidence.

WIRELESS FREEDOM is what MotorGuide's exclusive high-frequency Wireless Foot Pedal is all about. On/Off, Right/Left and Faster/Slower wireless motor commands make it a cinch to master for novice and expert alike. Simple, fast and precise wireless boat positioning from anywhere on the deck with a low-profile foot pedal – use it sitting or standing.



QUICK-RELEASE MOUNTING PLATE makes installation fast and simple. Made from tough extruded aluminum, the mounting plate locks in place to form a rock-solid connection and uses a common hole pattern. You can stow your motor in your vehicle while trailering to avoid rough-road abuse, or quickly transfer it to a secure location when you can't watch the boat. This patented piece of equipment comes standard.



BUILT-IN BATTERY INDICATOR includes four levels of charge data to maximize fishing time.

Features

- Wireless value is delivered with a built-in receiver. You're now free to add to your system
- Mix and match up to four Wireless Hand-helds or Wireless Foot Pedals in any combination
- Perfect for tournament situations and/or tough bites that require teamwork, precise boat control, and accurate bait presentations
- One hand stow and deploy. Stow and deploy is easy and ultra-smooth with our Wireless Edition motors. One hand and a light pull, and you're ready to make a run to your next spot

WIRELESS



TOURING PROFESSIONALS GET AN EDGE with MotorGuide's Tour Edition. There are a few reasons why successful touring pros run MotorGuide® Tour Edition. They rely on Tour for the Digital advantage that lets them dial into precise speeds – and leverage the benefits of longer battery life. Plus, Tour's tough stainless steel shafts and metal pedals and heads make it virtually indestructible. So when your livelihood depends on the performance of your equipment, you go with the top performing trolling motor. The good news is, even if your livelihood isn't tied to the pro tour, you can still get the same professional edge with the Tour Edition.



TOUR

Available Thrust:
75, 82, 109

Speed Control:
Digital Variable

Shaft Length:
45, 50, 60

DIGITAL

**TWO 2 YEAR
WARRANTY**

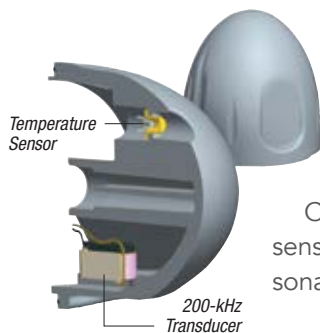




MOTORGUIDE DIGITAL monitors your motor's amp-draw, heat dissipation, output and other vital parameters, resulting in a cooler-running, more durable motor with an extended service life. Digital is a self-contained, sealed module in the lower unit of the Tour that brings all vital motor components together in one protected location, while eliminating outdated analog circuit boards and their related components.



GATOR® BREAKAWAY MOUNT is crafted using aircraft-grade aluminum and has a breakaway feature that guards against damage from underwater obstacles.



THE 83/200 kHz SONAR TRANSDUCER provides incredible detail and is epoxy-potted in the nose cone for maximum protection. Combined with a built-in temperature sensor and compatible with most current sonar products.

Features

- Stainless steel shafts and components, metal head, and pedal make this the toughest trolling motor ever
- Digital power from 75 to 109 pounds of thrust with 24 or 36-volt options
- Completely sealed Digital module is protected from heat, moisture, corrosion and shock, greatly improving durability
- MotorGuide Digital efficiency results in sustained battery life and more time on the water
- Soft-start feature ramps up power, creating smoother initial motion
- Machete® III Prop runs quiet and has a smaller diameter than two-blade designs for the ultimate shallow water performance
- Pull-pull cable steering with stainless steel pulleys is known for its feel and precision, limiting torque and fatigue
- Compact, hydrodynamic, lightweight lower units
- MicroSwitch is designed to withstand the demands of harsh, wet tournament conditions
- Gator Breakaway mount is crafted using extruded aircraft aluminum for rock-solid durability, with a breakaway feature that guards against damage from underwater obstacles
- Gator Breakaway mount features a hinged door for quick and easy motor removal

SMOOTH VARIABLE SPEED

and our exclusive Machete III prop combine for quiet operation that gets you closer to fish.



ALL METAL HEAD AND FOOT PEDAL. Durable construction ensures high performance.



THE X3 IS THE NEW CHOICE FOR PERFORMANCE AND PRECISE CONTROL.

We set out to design a rugged trolling motor with premium features.

The result is the X3, a highly versatile performer constructed with durable components and loaded with premium features. The X3 comes in foot and hand-operated models with available Digital power management.

Its combination of performance and price is sure to get the attention of anglers looking for quality and value.



X3

Available Thrust:
45, 55, 70

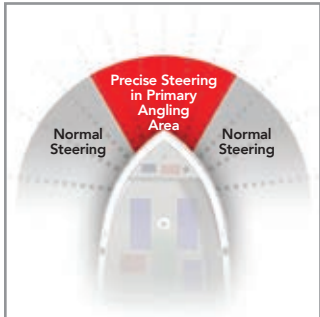
Speed Control:
5 Speed
5/2
Digital Variable

Shaft Length:
36, 45, 50

DIGITAL

**TWO 2 YEAR
WARRANTY**

VRS



VARIABLE RATIO STEERING gives anglers precise steering and boat control in the primary angling zone where it's needed most. This proprietary technology also reduces torque steering feedback for smoother operation. Plus, premium dual-cable steering is responsive and durable.

COMPOSITE INNER SHAFT is made with a premium material that will bend, but won't break. It's backed by a lifetime warranty, so you can fish anywhere with confidence. The outer shaft is large-diameter, corrosion-resistant stainless steel for added strength. (foot-operated models)



AIRCRAFT-GRADE ALUMINUM MOUNT features stainless steel bushings in key wear areas for long-term performance. Tight-fitting components and fewer metal-to-metal interfaces make the X3 a quiet performer during operation and while stowing and deploying.



The X3 is available in hand-operated Freshwater and Saltwater models

Features

Precise Steering and Control (foot-operated model)

- Variable Ratio Steering (patent pending) delivers precise steering and boat control
- Premium dual-cable, pull-pull steering is standard
- Ergonomic, heel-toe operated foot pedal is easy to use

Quiet on the Water

- Tight-fitting components and fewer metal-to-metal interfaces
- Collar keeps precision bearings secure for quiet operation and low wear
- Smooth-spinning 2-blade weedless propeller

Durable and Reliable

- Stable, wide-stance mount is constructed using rigid aircraft-grade aluminum
- Inner shaft is made with a premium composite with a lifetime guarantee against breaking
- Stainless steel bushings and precision bearings ensure long-term performance

Easy to Use

- Hinged "door" for easy motor height adjustment and removal
- Digital foot-control models feature a lighted steering indicator illuminated with LEDs. The LEDs provide quick and clear visibility for night fishing and have long-lasting durability
- Easy to stow and deploy

THE BULLDOG® PACKS BIG FIGHT IN A SMALL PACKAGE. The tough little Bulldog is specialized for small-boat, transom-mount applications. It comes in 40 lb. and 54 lb. thrust for plenty of power, and a 30" aluminum shaft. Its five forward speeds are controlled by a foot pedal joined by a 63" cable. Durable and reliable 360° rack-and-pinion steering.



BULLDOG

Available Thrust:
40, 54

Speed Control:
5 Speed

Shaft Length:
30





Features

- Durable and reliable 360° rack-and-pinion steering
- Five speeds forward with foot pedal control
- 63" cable for more placement options
- Quiet and smooth operation gets you closer to fish
- Versatile and adjustable transom mount

**VERSATILE
TRANSOM MOUNT**
can be modified for
backtrolling from the
bow

**TOUGH 30"
ALUMINUM SHAFT**
is perfect for small
boat applications

MACHETE III
propeller gets
you in the shallows
quieter and faster

FOOT PEDAL CONTROLS
5-speeds and durable
rack-and-pinion steering

BUILDING

VARIMAX™ TECHNOLOGY GIVES YOU THE FREEDOM TO FISH ALL DAY WITH UNMATCHED CONTROL OF YOUR BOAT, DAY IN AND DAY OUT.

Anglers will be quick to recognize the rugged, functional styling of VariMAX highlighted by the intuitive push/pull, forward and reverse speed adjustments. The BluVis™ function display shows direction (forward/reverse), precise speed settings, and 10 levels of battery voltage when turned off. These motors are designed to have the longest run time of any motor in its class and the advantage of precise Digital Variable speed adjustment. Fish longer, fish at exactly the speed you want, and fish quieter with VariMAX.



VARIMAX

Available Thrust:
75

Speed Control:
Digital Variable

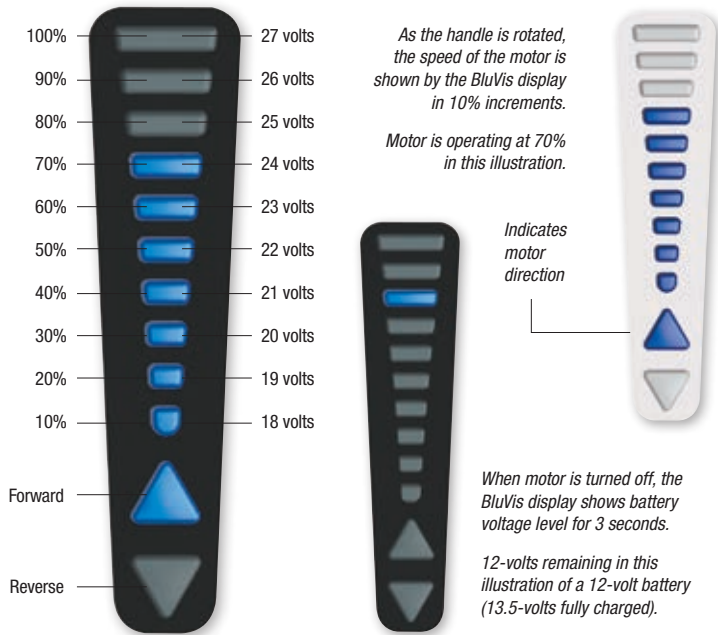
Shaft Length:
42, 50, 60

DIGITAL

**TWO 2 YEAR
WARRANTY**

Features

- Digital Variable speed control minimizes amp draw and maximizes fishing time – fish up to 5x longer than a 5-speed motor
- Large diameter 1.25" aluminum shaft for greater strength and durability
- Powerful 3.5" diameter VariMAX Digital motors run cooler and last longer
- Revolutionary intuitive push/pull, forward and reverse speed adjustments
- Precise BluVis integrated speed and battery indicator
- Aluminum transom mount with 7-point adjustment eliminates slack
- One-touch, rapid slide-depth adjustment collar
- Extendable Tri-Lobe, soft-touch handle. You set the length for the perfect feel and control
- Easy to adjust with a simple Allen wrench, the VariMAX's head can be repositioned for use on the bow, transom or even the side of your boat
- Convenient and reliable mount for pontoon applications (Freshwater model only)



NEVER GET STRANDED WITH THE BLUVIS™ FUNCTION DISPLAY.

BluVis shows direction, precise speed settings and 10 levels of battery voltage when turned off. (BluVis 24-volt motor example shown above.)



INDUSTRY-LEADING TRANSCOM MOUNT.

The VariMAX transom mount features aluminum alloy construction with a rugged powder coat finish. The stainless steel lock pin provides the ultimate in strength, rigidity and durability. Includes an easy-to-use tilt/stow/deploy mechanism and swing over knobs on the clamp screws, allowing you to lock the motor to the transom.



BOW MOUNTS. All the VariMAX bow mount motors are equipped with the legendary, rock-solid Gator® Breakaway mount.



CLASSIC HAND-CONTROLLED PERFORMANCE now comes with a choice of 5 speeds forward / 2 speeds reverse or Digital Variable speed control, which makes the R3 even more popular in the transom mount category. The improved R3 combines a durable, multi-position aluminum alloy mount and solid steel and aluminum 3.5" lower unit for versatility, durability and value.



Available Thrust:
30, 40, 45, 55

Speed Control:
5/2
Digital Variable

Shaft Length:
18, 30, 36, 42

DIGITAL





Features

- 5 speeds forward and 2 reverse, or Digital Variable speed control
- Reversible motor head for bow or transom mount operation
- Ergonomic, extending handle puts control at your fingertips
- Mount with 7-point adjustment
- Solid aluminum and steel lower unit with powder coat finish
- Stainless steel propeller shaft and 2-blade or 3-blade prop
- Quiet operation lets you get closer to the fish
- Powerful, 3.5" lower unit runs cooler and lasts longer



DEPENDABLE LOWER UNIT

is constructed of solid steel and aluminum with a powder coat finish.

INDUSTRY-LEADING TRANSOM MOUNT. Found on the 45 and 55 lb. thrust models, the R3 transom Wide-Bite® mount features aluminum alloy construction with a rugged powder coat finish. The stainless steel lock pin provides the ultimate in strength, rigidity and durability and ensures solid engagement in all seven positions.



PROPS. Go shallower, faster and quieter with our tapered hub, 2-blade or 3-blade weed-free prop.



TWIST-TILLER OPERATION.

Finger-tip control of 5 speeds forward and 2 reverse, or Digital Variable speed control for increased precision and longer battery life. Longer, ergonomic extending handle.

The R3 is available in Freshwater and Saltwater models

THE GREAT WHITE® IS PREPARED TO TAKE ON THE EXTREME TEST OF SALTWATER. Heat? Corrosion? Big-water pounding? All in a day's work for these powerful predators. Our Great White edition is the choice of guides, competitive anglers, and die-hards around the world. From the specially formulated coating, to the epoxy-sealed lower unit, to the stainless steel shaft – the durability starts on the outside and goes all the way to the core. Great White. A proven motor ready to go the distance with you in one of the most caustic environments on earth.



GREAT WHITE

Available Thrust:
82, 109

Speed Control:
Digital Variable

Shaft Length:
45, 50, 60

DIGITAL





UPGRADE TO THE GREAT WHITE MACHETE® III GLASS-FILLED PROPELLER. Go faster, go shallower, go quieter with MotorGuide's specially formulated material that's stiffer and more rugged. Get the durability that the pros demand. Sold as an option.

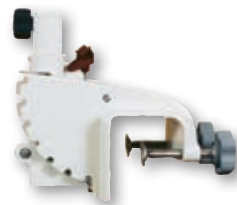


EATIN' UP THE ULTIMATE TEST. Shallow-water saltwater guides and anglers on the Saltwater Redfish circuits choose Great White Digital for a simple reason – they're the most dependable trolling motors out there. Long days on the flats are the ultimate test of your equipment, and these motors don't just pass it, they eat it up and come back for more. MotorGuide invented the saltwater-specific trolling motor and we continue leadership today as the choice of guides and avid saltwater anglers around the world.



Bow Mount

GREAT WHITE is available in bow mount and transom mount models.



Transom Mount

MOTORGUIDE® DIGITAL monitors your motor's amp draw, heat dissipation, output and other vital parameters. The result is a motor that self-regulates—a cooler, more durable running motor with an extended service life. It is a self-contained, sealed module in the lower unit that brings all vital motor components together in one protected location, eliminating outdated analog circuit boards and related componentry.



Features

- Digital power in 82 to 109 pounds of thrust with 24 or 36-volt power options
- Ultra pure aluminum coating "self-heals" from scratches providing added protection in abrasive shallow water use
- Stainless steel shaft, fasteners and control cables
- Anodized aluminum mounts and components prevent galvanic corrosion through our specialized multi-step process
- Completely sealed Digital module is protected from heat, moisture, corrosion and shock, greatly improving durability
- Improved efficiency results in extended battery life and more time on the water
- Soft-start feature ramps up power, creating smoother initial motion
- Quiet, smooth operation lets you get closer to the fish
- Machete® III propeller is quieter and has a smaller diameter than two-blade designs for ultimate shallow water performance
- Compact, lightweight lower units
- Saltwater anode for added corrosion protection



ERGONOMIC extending handle puts control at your fingertips.

GREAT WHITE

MOTORGUIDE® OFFERS A COMPLETE LINE OF PERFORMANCE-TUNED PROPELLERS TO ENHANCE YOUR MOTOR'S ALL-AROUND PERFORMANCE IN ANY APPLICATION. MotorGuide custom props were designed with the input of the Mercury® Propeller engineers and include weedless, power and shallow water options.



The Safari™ weedless delivers quiet power

2-Blade Power Prop
Hub Size: 3"
Application: Power & Efficiency
MGA0476B



3-Blade Aluminum Machete®
Hub Size: 3.5"
Application: Shallow & Durability
MGA087M



3-Blade Machete III Black
Hub Size: 3.5"
Application: Speed & Efficiency
MGA089B



3-Blade Machete III White Glass-Filled
Hub Size: 3.5"
Application: Speed & Efficiency
MGA089W



2-Blade Power Prop
Hub Size: 3.5"
Application: Power & Efficiency
MGA0495B



3-Blade Machete III Grey Glass-Filled
Hub Size: 3.5"
Application: Shallow & Durability
MGA089G



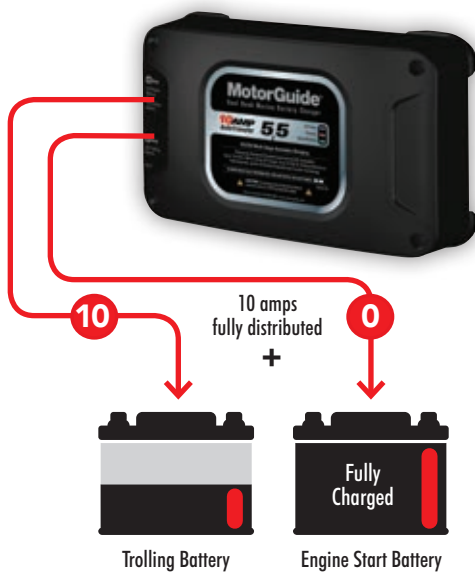
Safari™ Weedless
Hub Size: 3.5"
Application: Weedless & Power
8M0028330



Ninja™ Prop Wrench
Comes complete with spare prop nut and two prop pins, allowing fast prop changes.
MGA050B6



MOTORGUIDE'S RECREATIONAL-GRADE MARINE BATTERY CHARGERS use Auto Transfer Technology to maintain the engine crank while providing automatic charging to your trolling batteries. Simply plug it in for fully automatic charging with moderate charge times and built-in safe maintenance mode for long or short term storage. No more need for on-board portable battery chargers and the hassle of "one at a time" charging. These durable chargers are pre-wired for easy installation and are engineered for years of safe and convenient operation.



AUTO TRANSFER TECHNOLOGY

When the engine battery is fully charged, the unused amps will transfer to the trolling motor for faster charging.



Model 5
Amps: 5
Banks: Single
31705



Model 5/5
Amps: 10
Banks: Double
31710



Model 5/5/3
Amps: 13
Banks: Triple
31713

- Automatic charging for Lead Acid or GEL batteries
- Waterproof, shock-resistant, and saltwater tested
- Reverse polarity, ignition, and temperature protection
- LED indicators for Power, Charging, and Maintaining

Xi5

Xi5 QUICK-RELEASE BRACKET

Composite, White
8M0092063



Aluminum, Black
8M0092064

Xi5 WIRELESS REMOTE

Before operation, the handheld remote must be synced with the trolling motor. 2.4 GHz
8M0092068



Xi5 WIRELESS FOOT PEDAL

Intuitive, pro-style "heel-toe" operation controls steering, makes it extremely quiet, precise, and 50% faster than the competition. 2.4 GHz
8M0092069



PINPOINT® GPS

PINPOINT® GPS NAVIGATION SYSTEM

Ultra-precise GPS receiver and precision control make for incredibly accurate performance.
8M0092070



PINPOINT® GPS
REPLACEMENT REMOTE
8M0092071



NMEA 2000® STARTER KIT

For setting up an NMEA 2000® network required for a Pinpoint® GPS Gateway connection
8M0092086



Pinpoint® GPS GATEWAY KIT

Seamlessly integrates MotorGuide® and Lowrance® technologies.
8M0092085



RIGGING

TROLLING MOTOR POWER PLUG.

Two-prong 12-, 24- or 36-volt power plug provides a solid, safe connection.
8M4000953



TROLLING MOTOR POWER RECEPTACLE
Matching two-prong 12-, 24- or 36-volt trolling motor receptacle for bow-panel installation. 8M4000954

SONAR ADAPTERS WITH 7-PIN BLUE/GRAY CONNECTOR

The Sonar Adapters are designed to provide clean, clear signals for the leading sonar brands. For use with MotorGuide motors with blue/gray 7-pin sonar connector. See motorguide.com for the latest compatibility list.



LOWRANCE (6-Pin)
8M4001959



GARMIN (6-Pin)
8M4001961



VEVILAR (3-Pin)
8M4001960



HUMMINBIRD (7-Pin)
8M4001962

8-GAUGE BATTERY CABLE AND TERMINALS WITH 50-AMP MANUAL RESET BREAKER

Protect your investment with this 50-amp manual reset breaker and heavy-duty 8-ga. battery cable and terminal.
MM309922T



(50-amp) MM5870



(60-amp) 8M0064076

QUICK CLAMP BATTERY CONNECTORS

Heavy-duty connectors for quick battery removal, charging, and storage. 8M0092072



TROLLING MOTOR REPLACEMENT PLUG

Use with 16- to 8-gauge wire. Easy to connect with Trolling Motor Receptacle 8M0092066.
8M0092065



TROLLING MOTOR RECEPTACLE

Use with 10-gauge and 8-gauge wire. For 6-gauge wire, use Adapter 8M0092067.
8M0092066



TROLLING MOTOR RECEPTACLE - 6 GAUGE ADAPTER

Accepts 6-gauge wire. For use with Trolling Motor Receptacle 8M0092066.
8M0092067



WIRELESS

WIRELESS FOOT PEDAL

Simple, fast, and precise wireless boat positioning from anywhere on the deck. For use with all Wireless Series trolling motors. **8M4000952**



WIRELESS SERIES ANTI-SLIP RUBBER FOOT PEDAL PADS
8M0029474



WIRELESS HAND-HELD REMOTE

Take control from anywhere in the boat with our exclusive high-frequency remote. For use with Wireless Series trolling motors. **M887657**

WIRELESS MOUNTING PLATE

If you own multiple boats, take advantage of the quick-release Wireless Mounting Plate and swap your Wireless motor from boat to boat – it saves time and money. **8M4000975**



WIRELESS MOUNTING PLATE COVERS

Snap in place and clean up the deck.



FRESHWATER BLACK
MGA506A1

SALTWATER WHITE
8M4000292

TROLLING MOTOR MOUNTING KIT

Absorbs shock and protects electronics. Steel bolts and washers fit all trolling motors. Four per package. **8M4000873**



MOUNTING

UNIVERSAL QUICK RELEASE BRACKET

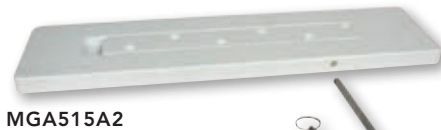
Quickly attach or remove any cable or electric steer motors. **8M0095972**



UNIVERSAL QUICK RELEASE BRACKET TOP PLATE

Flexibility to quickly and easily switch between motors. **8M0095973**

REMOVABLE MOUNT Makes motor removal and installation fast and simple. Universal hole patterns. Fits Gator® Flex 360, 20.8, 21, 21R, 24 and 24R mounts.



MGA515A2



MGA501A2

UNIVERSAL EXTENSION HANDLES

Locks into place to fit transom-mount trolling motors and most popular tiller engines.



MGA504A1



MGA503A1

MOUNTING ISOLATORS

Absorbs shock and protects electronics. Four per package. **MGA015PB6**



BOUNCE BUSTER™ II

For 21, 21R, 24 and 24R Gator Mounts. **MGA097B6**



MOTORGUIDE® RAM® MOUNT TROLLING MOTOR STABILIZERS

Considered essential by northern anglers and saltwater fishermen alike. Prevents damage to motor, shaft and head in rough water conditions.

RAIL MOUNT BASE

8M4000976

STANDARD

8M4000977

LONG

8M4000978



TIE DOWN STRAPS

The adjustable hook and loop strap keeps your trolling motor safely secured while trailering or on the water. **MGA507A1**



MOTORGUIDE® APPAREL AND GIFTS. Order official MotorGuide merchandise by calling 1-877-302-6372 or visit us at motorguide.com



SPORT VISOR

The perfect visor for a long day on the water. Sporty colorblocking joins Dry Zone moisture-wicking technology for a 5-panel visor that performs. 91% polyester nylon / 9% cotton twill. Adjustable Velcro closure. **\$14 each**

MESH BACK CAP

Bio washed twill front panels Ultra soft mesh sides and back. Unstructured, low profile, 6 panel. Matching under visor. Adjustable Velcro closure. **\$11 each**



PERFORMANCE CAP

100% polyester performance cap. Mid-to-low profile. Structured. Anti-glare undervisor. Flex fit sizing. Fits 7" to 7½" head sizes. **\$18 each**



LOGO TEE

100% cotton tee with center chest MotorGuide logo. Sizes S-3X. **\$11 each**



MULTI-TOOL KEYCHAIN

Includes flat head screwdriver, Phillips head screwdriver, knife, bottle opener, and LED light. Approximate size: 1 1/8" x 2 3/8". **\$6 each**

NEOPRENE COLLAPSIBLE

KOOZIE Premium quality Neoprene Collapsible can koozie. 4" high x 4" wide. Red and black available. **\$2.25 each**



BACKPACK

Protects your laptop with bold OGIO style. 600D poly/420D dobby poly. Top-entry padded laptop compartment. Fleece-lined valuables and digital media pocket. Organization panel. Dual side beverage/accessory holsters. Adjustable ergonomic shoulder straps. Dimensions: 19.25" H x 13" W x 9.5" D. Laptop sleeve: 15.5" H x 10.5" W x 1.5" D. Fits most 15" laptops. **\$55 each**

SOLAR SHIELD FISHING TEE

100% spun polyester fabric with UPF 30+ Sun Protection. Designed to wick moisture away from your skin for rapid evaporation, 4 to 8 times faster than 100% cotton. Easy-care fabric. Center chest MotorGuide logo print, with full back custom design. Sizes S-2X. **\$19 each**



COLOR BLOCK POLO

100% polyester, 4.3 oz, performance polo with antimicrobial and moisture wicking functions. Color-block body with self fabric collar. Contrasting shoulder inserts, neck tape and decorative stitching. Hemmed sleeves. Three-button placket. Easy care. Sizes M-3X. **\$34 each**



HOODED SWEATSHIRT

9.5oz, 80% cotton/20% polyester heavyweight hooded sweatshirt with front pouch pocket. MotorGuide logo printed on the center chest and left sleeve. Sizes M-2X. Add \$2.00 for 2X. **\$34 each**



FLEECE VEST

7.7 oz, 100% polyester anti-pill fleece. Center front reverse coil zipper. Brushed tricot-lined lower pockets with reverse coil zippers. Tonal coverstitch detailing. Stretch binding finish on armholes. **\$45 each**



PREMIER SERVICE CENTERS. For a complete list of service centers near you, visit motorguide.com/support/dealers/locator or contact consumer affairs at (920) 929-5040.



Xi5 - Pg 10



Wireless - Pg 12



Tour - Pg 14



X3 - Pg 16



Bulldog® - Pg 18



VariMAX™ - Pg 20



R3 - Pg 22



Great White® - Pg 24



Props & Chargers - Pg 26-27



Accessories - Pg 28-29

MotorGuide Motor Selection Chart - Freshwater Motors

Model	Part Number	Mount	Peak Thrust	Shaft	Shaft Material	Max AMP Draw	Volts	Speed Controls
Xi5 WIRELESS ELECTRIC STEER BOW MOUNT								
Xi5-55 / 48"	940800170	Xi5 Mount	55	48"	Composite	52	12	Digital Variable
Xi5-55 / 54"	940800180	Xi5 Mount	55	54"	Composite	52	12	Digital Variable
Xi5-80 / 54"	940800080	Xi5 Mount	80	54"	Composite	56	24	Digital Variable
Xi5-80 / 60"	940800090	Xi5 Mount	80	60"	Composite	56	24	Digital Variable
Xi5-105 / 54"	940800130	Xi5 Mount	105	54"	Composite	41	36	Digital Variable
Xi5-105 / 60"	940800140	Xi5 Mount	105	60"	Composite	41	36	Digital Variable
Xi5-55 / 48"	940800190	Xi5 Mount	55	48"	Composite	52	12	Digital Variable
Xi5-55 / 54"	940800200	Xi5 Mount	55	54"	Composite	52	12	Digital Variable
Xi5-80 / 54"	940800110	Xi5 Mount	80	54"	Composite	56	24	Digital Variable
Xi5-80 / 60"	940800120	Xi5 Mount	80	60"	Composite	56	24	Digital Variable
Xi5-105 / 54"	940800150	Xi5 Mount	105	54"	Composite	41	36	Digital Variable
Xi5-105 / 60"	940800160	Xi5 Mount	105	60"	Composite	41	36	Digital Variable
Xi5-55 / 45"	940800210	Xi5 Mount	55	45"	Composite	52	12	Digital Variable
Xi5-55 / 54"	940800220	Xi5 Mount	55	54"	Composite	52	12	Digital Variable
Xi5-80 / 45"	940800270	Xi5 Mount	80	45"	Composite	56	24	Digital Variable
Xi5-80 / 54"	940800230	Xi5 Mount	80	54"	Composite	56	24	Digital Variable
Xi5-80 / 60"	940800240	Xi5 Mount	80	60"	Composite	56	24	Digital Variable
Xi5-105 / 48"	940800280	Xi5 Mount	105	48"	Composite	41	36	Digital Variable
Xi5-105 / 54"	940800250	Xi5 Mount	105	54"	Composite	41	36	Digital Variable
Xi5-105 / 60"	940800260	Xi5 Mount	105	60"	Composite	41	36	Digital Variable
WIRELESS DIGITAL SERIES ELECTRIC STEER BOW MOUNT								
W45 Wireless / 48"	970100360	Removable Mount	45	48"	Composite	38	12	Digital Variable
W55 Wireless / 48"	970100020	Removable Mount	55	48"	Composite	52	12	Digital Variable
W55 Wireless / 54"	970100030	Removable Mount	55	54"	Composite	52	12	Digital Variable
W55 Wireless / 60"	970100060	Removable Mount	55	60"	Composite	52	12	Digital Variable
W75 Wireless / 54"	970100040	Removable Mount	75	54"	Composite	42	24	Digital Variable
W75 Wireless / 60"	970100050	Removable Mount	75	60"	Composite	42	24	Digital Variable
TOUR EDITION DIGITAL BOW MOUNT								
TR75 FB Digital / 45"	930010390	Gator® Breakaway	75	45"	Stainless Steel	42	24	Digital Variable
TR82 FB Digital / 45"	9BT42GAFF	Gator Breakaway	82	45"	Stainless Steel	56	24	Digital Variable
TR82 FB Digital / 50"	9BT52GAFF	Gator Breakaway	82	50"	Stainless Steel	56	24	Digital Variable
TR109 FB Digital / 45"	9BX43GAFF	Gator Breakaway	109	45"	Stainless Steel	41	36	Digital Variable
TR109 FB Digital / 50"	9BX53GAFF	Gator Breakaway	109	50"	Stainless Steel	41	36	Digital Variable
TR75L FB Digital / 45"	930010450	Gator Breakaway	75	45"	Stainless Steel	42	24	Digital Variable
TR82L FB Digital / 45"	930011020	Gator Breakaway	82	45"	Stainless Steel	56	24	Digital Variable
TR82L FB Digital / 50"	930011030	Gator Breakaway	82	50"	Stainless Steel	56	24	Digital Variable
TR82L FB Digital / 60"	930011040	Gator Breakaway	82	60"	Stainless Steel	56	24	Digital Variable
TR109L FB Digital / 45"	930011050	Gator Breakaway	109	45"	Stainless Steel	42	36	Digital Variable
TR109L FB Digital / 50"	930011060	Gator Breakaway	109	50"	Stainless Steel	42	36	Digital Variable
TR109L FB Digital / 60"	930011070	Gator Breakaway	109	60"	Stainless Steel	42	36	Digital Variable
X3 FOOT-CONTROL BOW MOUNT								
X3-45FW FB / 36"	940200050	X3 Mount	45	36"	Composite	38	12	5
X3-45FW FB / 45"	940200060	X3 Mount	45	45"	Composite	38	12	5
X3-45FW FB / 50"	940200070	X3 Mount	45	50"	Composite	38	12	5
X3-55FW FB / 36"	940200080	X3 Mount	55	36"	Composite	52	12	5
X3-55FW FB / 45"	940200090	X3 Mount	55	45"	Composite	52	12	5
X3-55FW FB / 50"	940200100	X3 Mount	55	50"	Composite	52	12	5
X3-70FW FB / 45"	940200110	X3 Mount	70	45"	Composite	42	24	5
X3-70FW FB / 50"	940200120	X3 Mount	70	50"	Composite	42	24	5
X3-55FW Digital / 36"	940200220	X3 Mount	55	36"	Composite	52	12	Digital Variable
X3-55FW Digital / 45"	940200170	X3 Mount	55	45"	Composite	52	12	Digital Variable
X3-70FW Digital / 45"	940200180	X3 Mount	70	45"	Composite	42	12	Digital Variable
X3 HAND-CONTROL BOW MOUNT								
X3-45FW HB / 50"	940200130	X3 Mount	45	50"	Composite	44	12	5/2
X3-55FW HB / 50"	940200140	X3 Mount	55	50"	Composite	49	12	5/2
X3-55FW HB Digital / 50"	940200190	X3 Mount	55	50"	Composite	49	12	Digital Variable
X3-55FW HB Pontoon / 50"	940200230	X3 Mount	55	50"	Composite	49	12	Digital Variable
VARIMAX™ DIGITAL HAND-CONTROL BOW MOUNT								
V75 HB Digital / 50"	966080035	Gator Breakaway	75	50"	Aluminum	42	24	Digital Variable
VARIMAX™ DIGITAL HAND-CONTROL PONTOON MOUNT								
V75 HP Digital / 50"	966050020	Pontoon	75	50"	Aluminum	42	24	Digital Variable
VARIMAX™ DIGITAL HAND-CONTROL TRANSOM MOUNT								
V75 HT Digital / 42"	966000070	#09 Transom Wide-Bite®	75	42"	Aluminum	42	24	Digital Variable
V75 HP Pontoon / 50"	966050025	Pontoon Mount	75	50"	Aluminum	42	24	Digital Variable
R3 HAND-CONTROL TRANSOM MOUNT								
R3-30 HT / 30"	940100170	#03 Transom	30	30"	Aluminum	36	12	5/2
R3-40 HT / 36"	940100160	#03 Transom	40	36"	Aluminum	43	12	5/2
R3-45 HT / 36"	940100150	#09 Transom Wide-Bite	45	36"	Composite	44	12	5/2
R3-55 HT / 36"	940100140	#09 Transom Wide-Bite	55	36"	Composite	49	12	5/2
R3-40 HT / 36" Digital	940100200	#03 Transom	40	36"	Aluminum	43	12	Digital Variable
R3-45 HT / 36" Digital	940100180	#09 Transom Wide-Bite	45	36"	Composite	44	12	Digital Variable
R3-55 HT / 36" Digital	940100190	#09 Transom Wide-Bite	55	36"	Composite	49	12	Digital Variable
R3-55 HT / 42" Digital	940100210	#09 Transom Wide-Bite	55	42"	Composite	49	12	Digital Variable
BULLDOG FOOT-CONTROL TRANSOM MOUNT								
Bulldog 40 FT / 30"	921500020	#03 Transom	40	30"	Aluminum	38	12	5
Bulldog 54 FT / 30"	921500090	Wide-Bite	54	30"	Aluminum	52	12	5

Motor Directions	Directional Indicator	Steering	Propeller	Integrated Sonar	Pinpoint GPS	Pinpoint GPS Gateway	Battery Meter	Recommended Boat Length
Forward	No	Wireless Pedal	2-Blade Safari™	No	Compatible	Compatible	Yes	14' - 18'
Forward	No	Wireless Pedal	2-Blade Safari	No	Compatible	Compatible	Yes	14' - 18'
Forward	No	Wireless Pedal	2-Blade Safari	No	Compatible	Compatible	Yes	17' - 21'
Forward	No	Wireless Pedal	2-Blade Safari	No	Compatible	Compatible	Yes	17' - 21'
Forward	No	Wireless Pedal	2-Blade Safari	No	Compatible	Compatible	Yes	20' - 24'
Forward	No	Wireless Pedal	2-Blade Safari	No	Compatible	Compatible	Yes	20' - 24'
Forward	No	Wireless Pedal	2-Blade Safari	Yes	Compatible	Compatible	Yes	14' - 18'
Forward	No	Wireless Pedal	2-Blade Safari	Yes	Compatible	Compatible	Yes	17' - 21'
Forward	No	Wireless Pedal	2-Blade Safari	Yes	Compatible	Compatible	Yes	17' - 21'
Forward	No	Wireless Pedal	2-Blade Safari	Yes	Compatible	Compatible	Yes	20' - 24'
Forward	No	Wireless Pedal	2-Blade Safari	Yes	Compatible	Compatible	Yes	20' - 24'
Forward	No	Wireless Pedal/GPS Remote	2-Blade Safari	Yes	Yes	Compatible	Yes	14' - 18'
Forward	No	Wireless Pedal/GPS Remote	2-Blade Safari	Yes	Yes	Compatible	Yes	14' - 18'
Forward	No	Wireless Pedal/GPS Remote	2-Blade Safari	Yes	Yes	Compatible	Yes	17' - 21'
Forward	No	Wireless Pedal/GPS Remote	2-Blade Safari	Yes	Yes	Compatible	Yes	17' - 21'
Forward	No	Wireless Pedal/GPS Remote	2-Blade Safari	Yes	Yes	Compatible	Yes	17' - 21'
Forward	No	Wireless Pedal/GPS Remote	2-Blade Safari	Yes	Yes	Compatible	Yes	20' - 24'
Forward	No	Wireless Pedal/GPS Remote	2-Blade Safari	Yes	Yes	Compatible	Yes	20' - 24'
Forward	No	Wireless Pedal/GPS Remote	2-Blade Safari	Yes	Yes	Compatible	Yes	20' - 24'
Forward	No	Wireless Pedal	Machete® III	No	No	No	Yes	12' - 17'
Forward	No	Wireless Pedal	Machete III	No	No	No	Yes	14' - 18'
Forward	No	Wireless Pedal	Machete III	No	No	No	Yes	14' - 18'
Forward	No	Wireless Pedal	Machete III	No	No	No	Yes	14' - 18'
Forward	No	Wireless Pedal	Machete III	No	No	No	Yes	17' - 20'
Forward	No	Wireless Pedal	Machete III	No	No	No	Yes	17' - 20'
Forward	Lighted	Dual Cable	Machete III	No	No	No	No	16' - 19'
Forward	Lighted	Dual Cable	Machete III	No	No	No	No	17' - 21'
Forward	Lighted	Dual Cable	Machete III	No	No	No	No	17' - 21'
Forward	Lighted	Dual Cable	Machete III	No	No	No	No	18' - 23'
Forward	Lighted	Dual Cable	Machete III	No	No	No	No	18' - 23'
Forward	Lighted	Dual Cable	Machete III	Yes	No	No	No	16' - 19'
Forward	Lighted	Dual Cable	Machete III	Yes	No	No	No	17' - 21'
Forward	Lighted	Dual Cable	Machete III	Yes	No	No	No	17' - 21'
Forward	Lighted	Dual Cable	Machete III	Yes	No	No	No	18' - 23'
Forward	Lighted	Dual Cable	Machete III	Yes	No	No	No	18' - 23'
Forward	Lighted	Dual Cable	Machete III	Yes	No	No	No	18' - 23'
Forward	Yes	Dual Cable / VRS	2-Blade Safari	No	No	No	No	14' - 17'
Forward	Yes	Dual Cable / VRS	2-Blade Safari	No	No	No	No	14' - 17'
Forward	Yes	Dual Cable / VRS	2-Blade Safari	No	No	No	No	14' - 17'
Forward	Yes	Dual Cable / VRS	2-Blade Safari	No	No	No	No	16' - 19'
Forward	Yes	Dual Cable / VRS	2-Blade Safari	No	No	No	No	16' - 19'
Forward	Yes	Dual Cable / VRS	2-Blade Safari	No	No	No	No	16' - 19'
Forward	Yes	Dual Cable / VRS	2-Blade Safari	No	No	No	No	17' - 21'
Forward	Yes	Dual Cable / VRS	2-Blade Safari	No	No	No	No	17' - 21'
Forward	Lighted	Dual Cable / VRS	2-Blade Safari	No	No	No	No	16' - 19'
Forward	Lighted	Dual Cable / VRS	2-Blade Safari	No	No	No	No	16' - 19'
Forward	Lighted	Dual Cable / VRS	2-Blade Safari	No	No	No	No	17' - 21'
Forward/Reverse	No	Twist/Extendable	3-Blade	No	No	No	No	14' - 17'
Forward/Reverse	No	Twist/Extendable	3-Blade	No	No	No	No	16' - 19'
Forward/Reverse	No	Twist/Extendable	3-Blade	No	No	No	Yes	16' - 19'
Forward/Reverse	No	Twist/Extendable	3-Blade	No	No	No	Yes	12' - 20'
Forward/Reverse	No	Twist/Extendable	Machete III	No	No	No	BluVis	17' - 21'
Forward/Reverse	No	Twist/Extendable	Machete III	No	No	No	BluVis	18' - 22'
Forward/Reverse	No	Twist/Extendable	Machete III	No	No	No	BluVis	17' - 21'
Forward/Reverse	No	Twist/Extendable	Machete III	No	No	No	BluVis	17' - 21'
Forward/Reverse	No	Twist/Extendable	2-Blade	No	No	No	No	10' - 14'
Forward/Reverse	No	Twist/Extendable	3-Blade	No	No	No	No	12' - 16'
Forward/Reverse	No	Twist/Extendable	3-Blade	No	No	No	No	14' - 18'
Forward/Reverse	No	Twist/Extendable	3-Blade	No	No	No	No	16' - 20'
Forward/Reverse	No	Twist/Extendable	3-Blade	No	No	No	Yes	12' - 16'
Forward/Reverse	No	Twist/Extendable	3-Blade	No	No	No	Yes	14' - 18'
Forward/Reverse	No	Twist/Extendable	3-Blade	No	No	No	Yes	16' - 20'
Forward/Reverse	No	Twist/Extendable	3-Blade	No	No	No	Yes	16' - 20'
Forward	Yes	Single Cable	Machete III	No	No	No	No	10' - 16'
Forward	Yes	Single Cable	Machete III	No	No	No	No	12' - 18'

MotorGuide Motor Selection Chart - Saltwater Motors

Model	Part Number	Mount	Peak Thrust	Shaft	Shaft Material	Max AMP Draw	Volts	Speed Controls
Xi5 WIRELESS ELECTRIC STEER BOW MOUNT								
Xi5-55 / 48"	941700060	Xi5 Mount	55	48"	Composite	52	12	Digital Variable
Xi5-55 / 54"	941700070	Xi5 Mount	55	54"	Composite	52	12	Digital Variable
Xi5-80 / 54"	941700020	Xi5 Mount	80	54"	Composite	56	24	Digital Variable
Xi5-80 / 60"	941700030	Xi5 Mount	80	60"	Composite	56	24	Digital Variable
Xi5-105 / 54"	941700040	Xi5 Mount	105	54"	Composite	41	36	Digital Variable
Xi5-105 / 60"	941700050	Xi5 Mount	105	60"	Composite	41	36	Digital Variable
Xi5 80 / 48" GPS	941700110	Xi5 Mount	80	48"	Composite	56	24	Digital Variable
Xi5-55 / 54" GPS	941700080	Xi5 Mount	55	54"	Composite	52	12	Digital Variable
Xi5-80 / 60" GPS	941700090	Xi5 Mount	80	60"	Composite	56	24	Digital Variable
Xi5-105 / 60" GPS	941700100	Xi5 Mount	105	60"	Composite	41	36	Digital Variable
GREAT WHITE® DIGITAL HAND-CONTROL BOW MOUNT								
SW82 HB Digital / 50"	924410050	Gator® Breakaway SW	82	50"	Stainless Steel	56	24	Digital Variable
SW82 HB Digital / 60"	924410060	Gator Breakaway SW	82	60"	Stainless Steel	56	24	Digital Variable
SW109 HB Digital / 50"	924410070	Gator Breakaway SW	109	50"	Stainless Steel	41	36	Digital Variable
SW109 HB Digital / 60"	924410080	Gator Breakaway SW	109	60"	Stainless Steel	41	36	Digital Variable
VARIMAX™ DIGITAL HAND-CONTROL BOW MOUNT								
V75SW HB Digital / 50"	966180830	Gator Breakaway SW	75	50"	Stainless Steel	42	24	Digital Variable
V75SW HB Digital / 60"	966180840	Gator Breakaway SW	75	60"	Stainless Steel	42	24	Digital Variable
X3 HAND-CONTROL BOW MOUNT								
X3-55SW HB Digital / 50"	941300010	X3 Mount	55	50"	Composite	49	12	Digital Variable
GREAT WHITE® DIGITAL HAND-CONTROL TRANSOM MOUNT								
SW82 HT Digital / 45"	9CT42KQAX	#09 Transom Wide-Bite	82	45"	Stainless Steel	56	24	Digital Variable
SW109 HT Digital / 50"	9CX53KQAX	#09 Transom Wide-Bite	109	50"	Stainless Steel	41	36	Digital Variable
R3 HAND-CONTROL TRANSOM MOUNT								
R3-45SW HT Digital / 18" KAYAK	941000030	#09 Transom Wide-Bite	45	18"	Composite	44	12	Digital Variable
R3-45SW HT Digital / 36"	941000010	#09 Transom Wide-Bite	45	36"	Composite	44	12	Digital Variable
R3-55SW HT Digital / 36"	941000020	#09 Transom Wide-Bite	55	36"	Composite	49	12	Digital Variable

Motor Directions	Directional Indicator	Steering	Propeller	Integrated Sonar	Pinpoint GPS	Pinpoint GPS Gateway	Battery Meter	Recommended Boat Length
Forward	No	Wireless Remote	2-Blade Safari™	No	Compatible	Compatible	Yes	14' - 18'
Forward	No	Wireless Remote	2-Blade Safari	No	Compatible	Compatible	Yes	14' - 18'
Forward	No	Wireless Remote	2-Blade Safari	No	Compatible	Compatible	Yes	17' - 21'
Forward	No	Wireless Remote	2-Blade Safari	No	Compatible	Compatible	Yes	17' - 21'
Forward	No	Wireless Remote	2-Blade Safari	No	Compatible	Compatible	Yes	20' - 26'
Forward	No	Wireless Remote	2-Blade Safari	No	Compatible	Compatible	Yes	20' - 26'
Forward	No	GPS Remote	2-Blade Safari	No	Yes	Compatible	Yes	17' - 21'
Forward	No	GPS Remote	2-Blade Safari	No	Yes	Compatible	Yes	14' - 18'
Forward	No	GPS Remote	2-Blade Safari	No	Yes	Compatible	Yes	17' - 21'
Forward	No	GPS Remote	2-Blade Safari	No	Yes	Compatible	Yes	20' - 26'
Forward/Reverse	No	Twist/Extendable	Machete® III	No	No	No	No	18' - 22'
Forward/Reverse	No	Twist/Extendable	Machete III	No	No	No	No	18' - 22'
Forward/Reverse	No	Twist/Extendable	Machete III	No	No	No	No	20' - 26'
Forward/Reverse	No	Twist/Extendable	Machete III	No	No	No	No	20' - 26'
Forward/Reverse	No	Twist/Extendable	Machete III	No	No	No	BluVis	17' - 21'
Forward/Reverse	No	Twist/Extendable	Machete III	No	No	No	BluVis	17' - 21'
Forward/Reverse	No	Twist/Extendable	Machete III	No	No	No	Yes	16' - 19'
Forward/Reverse	No	Twist/Extendable	Machete III	No	No	No	No	18' - 22'
Forward/Reverse	No	Twist/Extendable	Machete III	No	No	No	No	20' - 26'
Forward/Reverse	No	Twist/Extendable	Machete III	No	No	No	Yes	8' - 16'
Forward/Reverse	No	Twist/Extendable	Machete III	No	No	No	Yes	14' - 18'
Forward/Reverse	No	Twist/Extendable	Machete III	No	No	No	Yes	16' - 20'

Consumer Service: 1-920-929-5040

Eagle, HDS and Lowrance are registered trademarks of Navico. Garmin is a registered trademark of Garmin Ltd. MotorGuide, Great White, Mercury Marine, Mercury Propellers, Machete, Gator, Pinpoint and VariMax are registered trademarks of Brunswick Corporation. WideBite, Cradle Lock, Shark Logo and Bounce Buster are trademarks of Brunswick Corporation. Humminbird is a trademark of Johnson Outdoors, Inc. VELCRO is a registered trademark of Velcro Industries B.V. Vexilar is a registered trademark of Vexilar, Inc.

